

Data linkage software between production facilities and host systems

# OPC Spider

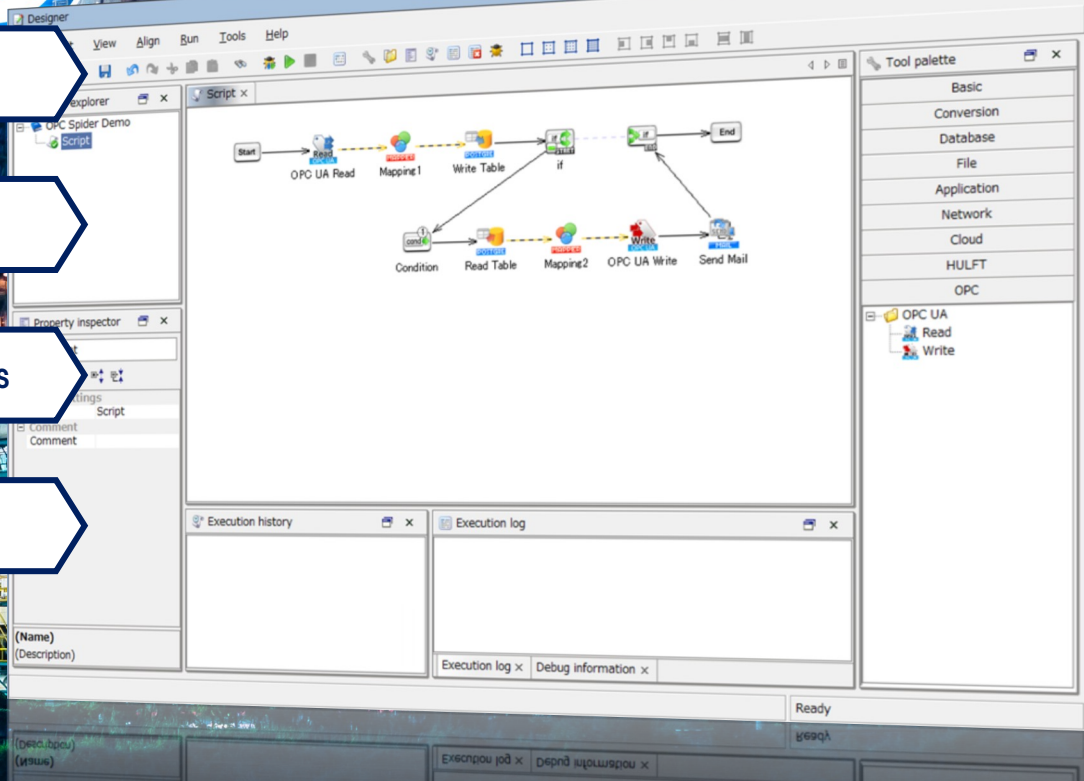


OPC UA Supported

No programming required

Reduce development costs

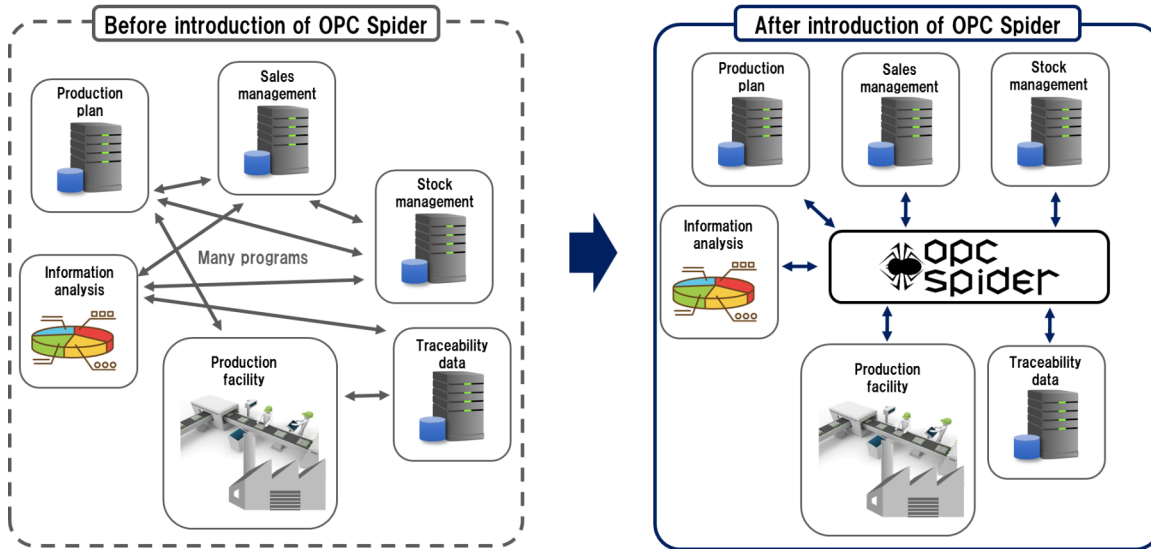
Reduce handoffs



# Data linkage between a production facility and a host system with only a few clicks

## Overview

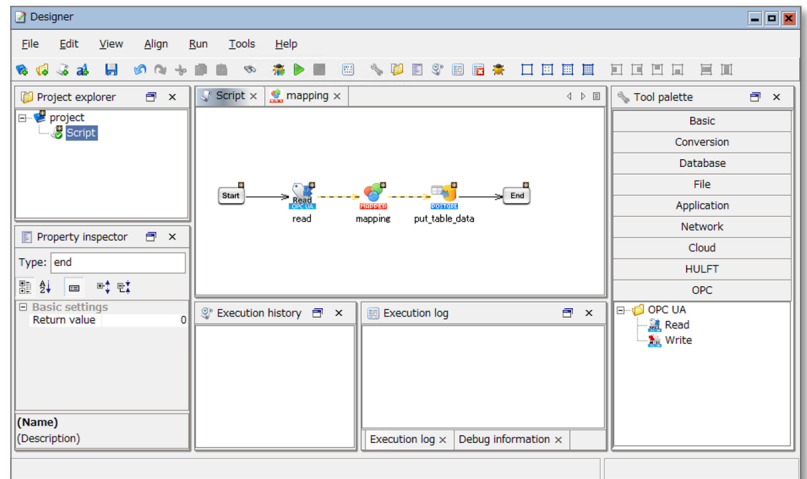
Utilized as a data linkage hub to shorten the development term and reduce costs.



## Features

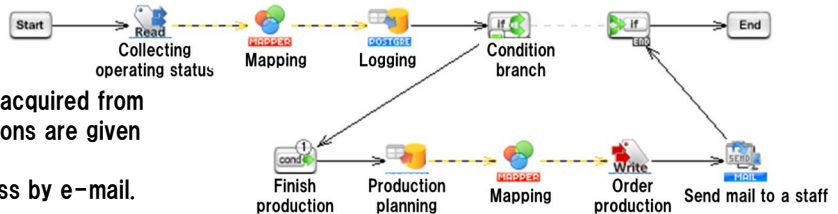
### No programming required

- ◆ Includes adapters and conversion processing for various input / output types.
- ◆ Also includes various triggers for execution.
- ◆ Drag and drop the icon of the adapter, create a data linkage process, and set a trigger.
- ◆ Data linkage process will execute when the trigger condition has been fulfilled.



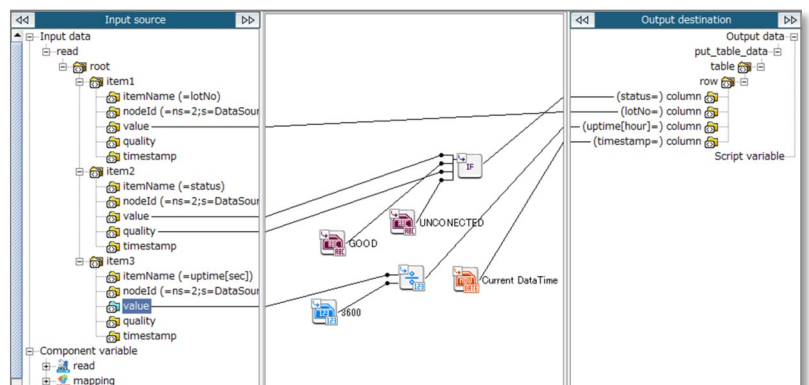
Possible with up to 10 icons!

- Operating status of the production facility is logged in a database.
- After production is completed, the next plan is acquired from the database and the next production instructions are given to the facility.
- The administrator can be notified of the progress by e-mail.



### Easy mapping

If you want to connect different types of data to each other, you can convert the data to a common format and handle it as if it were the same kind of data by using the built-in GUI mapping tool.



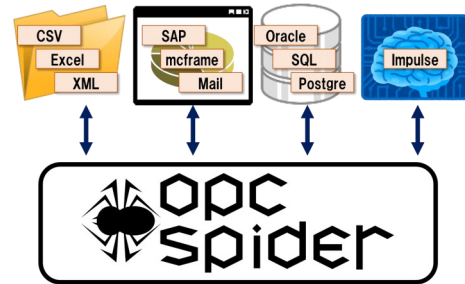
## Auto-creation of specifications

- ◇ Able to output specifications from a created script.
- ◇ Able to check and hand off processed data with ease.

No.	Name	Type	Input data	Memo
1		start		
2	OPC UA Read	Read		
3	Mapping1	Mapping	OPC UA Read	
4	Write Table	Write Table	Mapping1	
5	If	Conditional Branch		
6		End Conditional Branch		
7		end		
8	Read Table	Read Table		
9	OPC UA Write	Write	Mapping2	
10	Mapping2	Mapping	Read Table	
11	Send Mail	Send One E-mail		
12	Condition	Condition		

## Rich connectivity

- ◇ Includes several adapters for connectivity with various applications (OPC UA, various file types, databases, BI tools, cloud, etc).
- ◇ OPC Spider can act as a data linking hub.

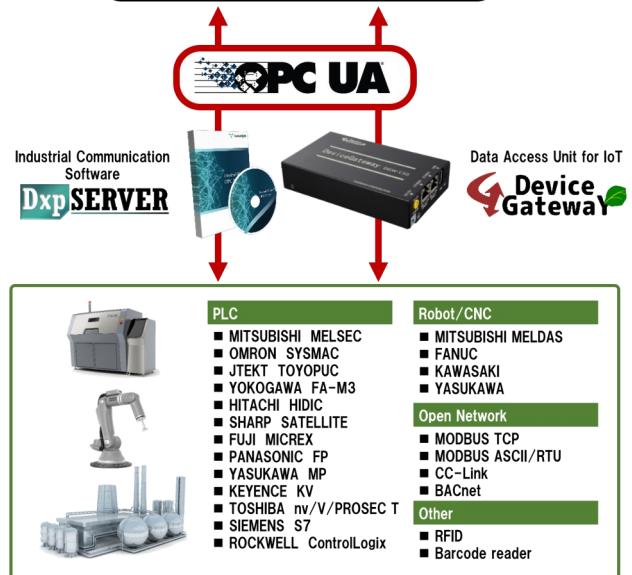


## OPC UA Compatibility

- ◇ Supported by OPC UA which is the de-facto standard for data exchange in the industrial field.

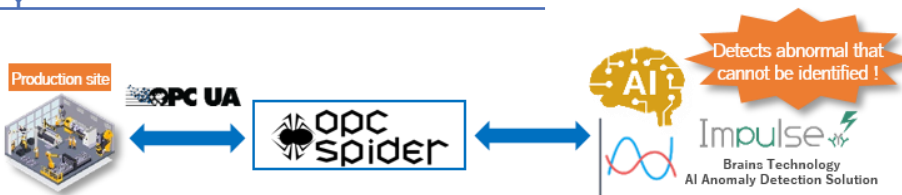
<Supported OPC UA Profiles>

- Data Access
  - Read / Write
- Historical Access
  - Read



※ For details about our OPC products, please refer to the "DeviceXplorer OPC Server, and "DeviceGateway" product catalogs.

## AI Solution (Impulse Linkage)



OPC Spider's Impulse Adapter can be used to link with Brains Technology's "Impulse" anomaly detection system. OPC Spider can send equipment data, retrieve inference results, and feed them back to the equipment, enabling the linkage of production line operating data to the AI platform to improve productivity.

# Package line-up

Production Name	Model Code *1	Number of server(runtime)	Number of client	Adapter														Trigger												
				OPC UA	CSV	File operation	REST	HULFT	JDBC	Oracle	Microsoft SQL Server	PostgreSQL	MySQL	XML	Microsoft Excel	FTP	Mail	Variable-Length	IBM Domino	Microsoft Azure	SAP	Schedule	Application	HULFT Script	File	FTP				
<b>Package</b>																														
OPC Spider	OPCSP-E	1	2	●	●	●	●	●	○*2	○*2	○*2	○*2	○*2														●	●	●	
<b>Optional Adapter</b>																														
JDBC	OPCSP-ADP-JDBC-E																													
Oracle	OPCSP-ADP-ORAC-E																													
Microsoft SQL Server	OPCSP-ADP-MSSQ-E																													
PostgreSQL	OPCSP-ADP-POSG-E																													
MySQL	OPCSP-ADP-MYSQ-E																													
XML	OPCSP-ADP-XMLF-E																													
Microsoft Excel	OPCSP-ADP-MEXL-E																													
FTP	OPCSP-ADP-FTPC-E																													
Mail	OPCSP-ADP-MAIL-E																													
Variable-Length	OPCSP-ADP-YARL-E																													
IBM Domino	OPCSP-ADP-IDMN-E																													
Microsoft Azure	OPCSP-ADP-MAZR-E																													
SAP *3	OPCSP-ADP-SAPA-E																													
<b>Optional Trigger</b>																														
File	OPCSP-TRG-FILE-E																													
FTP	OPCSP-TRG-FTPS-E																													

- \*1: For subscription version, please add "-S" in the model code as shown in the table.
- \*2: Select one. The second or more can be added as an option.
- \*3: There are restrictions on supported platforms. Please contact us for more details.
- \* For perpetual license version, an annual support fee (20% of the license price) is required from the time of purchase.

## Operating environment

### Runtime

Support OS	Microsoft Windows Server 2016 / 2019 / 2022 Essentials/Standard/Datacenter (x64) Red Hat Enterprise Linux Server 6.x *1 / 7.x / 8.x (x64) CentOS 7.x (x64) *2 Oracle Linux 7.x*3 / 8.x (x64) Amazon Linux 2*4
HDD	2GB or more free space
Memory	Windows/Linux x64 2GB or more

### Development Client

Support OS	Microsoft Windows Server 2016 / 2019 / 2022 Essentials/Standard/Datacenter (x64) Microsoft Windows 10 Pro/Enterprise (x86, x64) Microsoft Windows 11 Pro/Enterprise (x64)
HDD	1GB or more free space
Memory	Windows/Linux x86 512MB or more

## Adapter supported version

MySQL	8.0
Oracle	19c Oracle Cloud Infrastructure Database 19c
PostgreSQL	13 / 12 *5
Microsoft SQL Server	2019 / 2017 / 2016 / 2014*6
Microsoft Excel	2021 / 2019 / 2016

- \*1 Scheduled to end support on 2024/6/30
- \*2 Scheduled to end support on 2024/6/30
- \*3 Scheduled to end support on 2024/7/31
- \*4 Scheduled to end support on 2025/6/30
- \*5 Scheduled to end support on 2024/11/30
- \*6 Scheduled to end support on 2024/7/31



29, Mamedacho, Nishikyogoku, Ukyo-Ku, Kyoto,  
615-8501, Japan  
TEL +81-75-325-2261  
FAX +81-75-325-2273

### Support Desk

fa-support@takebishi.co.jp

Availability:  
Weekdays: 9:00-17:00  
Japan local time

