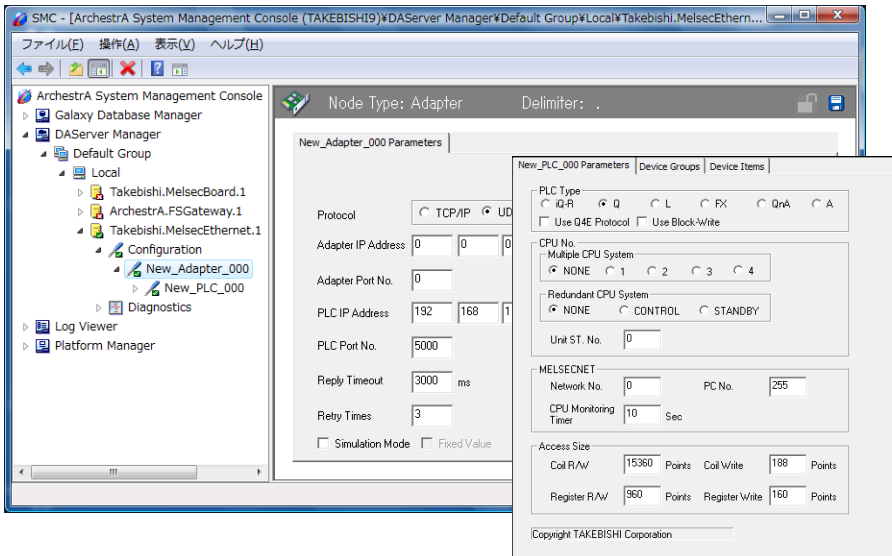


# Compatible with Wonderware ArchestrA DAServer Software



DAServer is a communication middleware which corresponds with “ArchestrA” that is the architecture of Wonderware. DAServer supports DDE/SuiteLink protocol as I/O Server, moreover DAServer corresponds with “OPC” that is standard interface specification for PLC communication between applications in the manufacturing industry. DAServer realizes seamless system construction. This is because DAServer makes ArchestrA organize the setting and diagnosis information.

## DAServer Device Integration

Changing configuration during communication!

### Hot configuration

DAServer reflects changes of communication parameter automatically without stopping client applications. It enable to maintain the communication environment while operating, by means of perfectly separating communication from monitoring

Remote maintenance!

### Remote configuration

When a DAServer is installed in PC which works on LAN, setting changes and RAS diagnoses of the DAServer can be activated remotely. From office, remote maintenance of PCs installed in each place can be performed while distribution systems are being constructed.

Corresponded with “OPC” which communicate between applications.

### Corresponded with SuiteLink / DDE / FastDDE / OPC

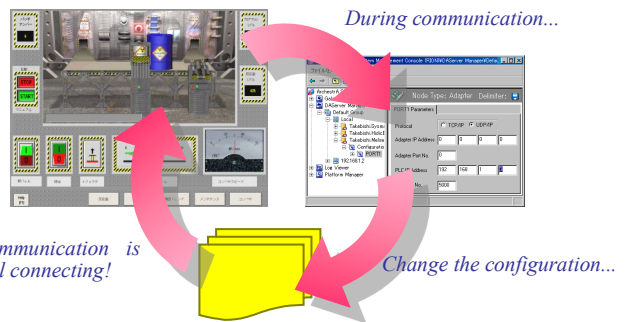
As a matter of course, DAServer corresponds with DDE/FastDDE. And it is also comatible with SuiteLink which offers high throughput, moreover OPC,namely defacto standard. DAServer offers appropriate data access for client applications in any case.

Speedy tracing for finding factor of trouble!

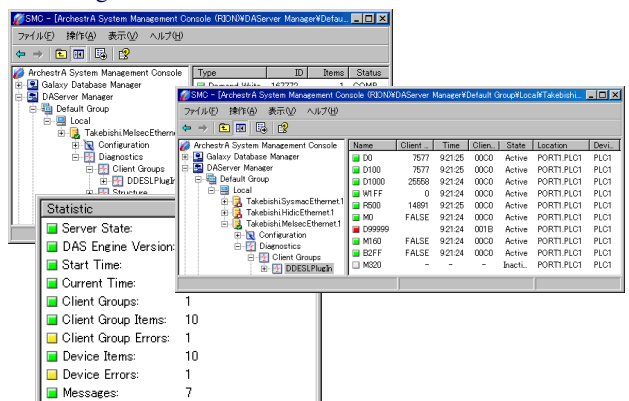
### Various RAS functions

Various information—such as server information, communication information, current value and quality indicator can be monitored from SMC(System Management Console). Write transaction history will be stored automatically so that it makes easier to find factor of trouble.

### Hot configuration



### RAS diagnosis



## [Lineup]

Product	Model	Support
MELSEC Ethernet DAServer	QE71DAS-E	MITSUBISHI MELSEC iQ-R/Q/QnA/A Series Ethernet
MELSEC Serial DAServer	QC24DAS-E	MITSUBISHI MELSEC-Q/QnA/A/FX Series Serial
MELSEC PCBoard DAServer	Q8BDAS-E	MITSUBISHI MELSEC PCI Board
SYSMAC Ethernet DAServer	SYSDAS-E	OMRON SYSMAC-CJ/CS/CV Series Ethernet
FA-M3 Ethernet DAServer	FAMDAS-E	YOKOGAWA FA-M3(R) Ethernet
HIDIC Ethernet DAServer	HIDAS-E	HITACHI HIDIC-EH(V)/H Series Ethernet

## [Support Devices]

Vendor	Series	CPU	Ethernet	Serial	Others
MITSUBISHI	MELSEC iQ-R	R04CPU, R08CPU, R16CPU R32CPU, R120CPU	RJ71EN71		
	MELSEC Q	Q00(U)(J)CPU, Q01(U)CPU Q02(U/H/PH)CPU Q03UD(E)CPU, Q04UD(E)HCPU Q06(P)HCPU, Q06UD(E)HCPU Q12(P/PR)HCPU, Q25(P/PR)HCPU Q13UD(E)HCPU, Q26UD(E)HCPU Q10UD(E)HCPU, Q20UD(E)HCPU Q50UDEHCPU, Q100UDEHCPU Q03UDVCP, Q04UD(P)VCP Q06UD(P)VCP, Q13UD(P)VCP Q26UD(P)VCP	QJ71E71-100 QJ71E71-B2 QJ71E71-B5	QJ71C24N QJ71C24N-R2 QJ71C24N-R4	Q81BD-J71GP21(S)-SX Q81BD-J71LP21-25 Q81BD-J61BT11 Q80BD-J71GP21(S)-SX Q80BD-J71LP21(S)-25 Q80BD-J71LP21G Q80BD-J71BR11 Q80BD-J61BT11N
	MELSEC L	L02/06CPU(-P), L26CPU(-P)BT	LJ71QE71		
	MELSEC QnA	Q2A(S/SH)CPU(-S1) Q3ACPU Q4A(R)CPU	A(1S)J71QE71(N/N3)(-T/-B2/-B5)	AJ71QC24(N)(-R2/-R4) A1SJ71QC24(N)(-R2)	A70BD-J71QLP23(G/GE) A70BD-J71QLR23 A70BD-J71QBR(11/13)
	MELSEC A	A1(N)(S/SH)CPU A2(N/A/U)(S)CPU(-S1) A3(N/A/U)CPU, A4UCPU	AJ71E71(-S3) A(1S)J71E71(N/N3)(-T/-B2/-B5)	AJ71C24-S8 A(1S)J71UC24	A70BD-AF A80BD-A2USH-S1 A80BD-J61BT(11/13)
	MELSEC FX	FX0(S/N), FX1(S/N/NC) FX2(N/2NC/2C), FX3(S/U/UC/G/GC) FX5U(C)	FX3U-ENET(-L) FX3U-ENET-ADP Build in Ethernet port	FXxx-(232/485)-BD FXxx-(232/485)-ADP	
OMRON	SYSMAC-CJ	CJ1G, CJ1H, CJ1M, CJ2, CJ2H, CJ2M, NSJ	CJ1W-ETN11/21		
	SYSMAC-CS	CS1G, CS1H	CS1W-ETN21/11/01		
	SYSMAC-CP	CP1H	CP1W-CIF41 CJ1W-ETN21/11		
	SYSMAC-CV	CVM1(D), CV500/1000/2000	CV500-ETN01		
	SYSMAC-C	C200/1000/2000H, CQM1(H), CPM1/2			
	SYSMAC One NSJ	NSJ	NSJW-ETN21		
YOKOGAWA	FA-M3V/M3R	F3SP71-4S/N, F3SP76-7S/N, F3SP	F3LE12-0T, F3LE11-0T, F3LE01-0T		
HITACHI	EH150-EHV	EHV-CPU16/32/64/128	EH-ETH(2) Build in Ethernet port		
	EH150	EH-CPU104A/208A/316A/516/548	EH-ETH(2)		
	H	H-1002/2002/4010, H-252/302/702	LAN-ETH(2)		

## [Specification]

Item	Description
Support OS	Windows 10 / 8.1 / 7 / Vista / WindowsServer 2016 / 2012(R2) / 2008(R2)
Support W.W.	DAServer is used with Wonderware InTouch 8 or later, Historian 8.0 or later.
Maximum PLCs	62
Support Interface	DDE, SuiteLink, OPC-DA2.05A
Maximum Tags	Unlimited

Item	Description
Data Type	VT_BOOL, VT_I2, VT_UI2, VT_I4, VT_R4, VT_BSTR
Expansion Format	Boolean, Floating, String 16bit signed integer, 16bit unsigned integer 32bit signed integer, 16bit BCD, 32bit BCD Register bit position specification Text-format decimal, Text-format hexadecimal
Service Activation	Enable



**TAKEBISHI Corporation**

Kyoto Head Office  
29 Mamedacho Nishikyogoku Ukyoku Kyoto 615-8501, JAPAN



Support Dial

+81-75-325-2261  
fa-support@takebishi.co.jp

Available:  
Weekday:9:00-17:00

